

Handheld Wireless Remote Magnetic Holder

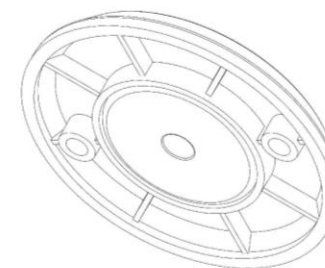
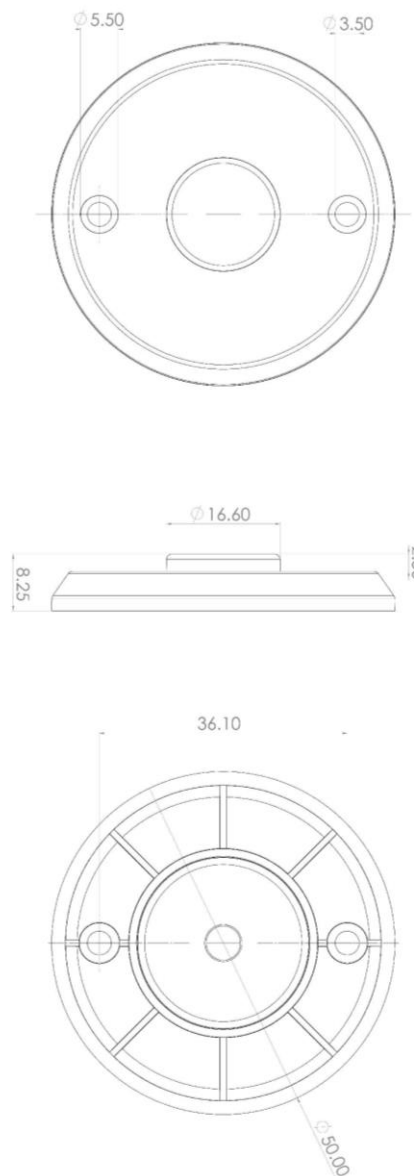


Package includes:

- 1. Magnetic plastic holder x1
- 2. Decorative sticker x1
- 3. Mounting screws x2
- 4. Stainless steel ring x1
- 5. Stainless steel ring double-sided tape x1



Dimension: (Unit: mm)



Installation:

● Handheld wireless remote

1. Using double-sided tape to adhere onto the flat side of stainless-steel ring.



2. Adhere the ring on the back side of handheld wireless remote.



● Permanent mounting:

1. Use mounting screws to mount the holder onto a flat surface.

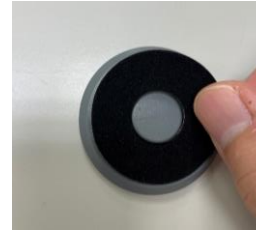


2. Adhere the decorative sticker on top of holder.



● Temporary mounting:

1. Adhere the decorative sticker on top of holder.



2. Place the holder on any metal surface using its magnetic force for mounting.



3. Place the handheld wireless remote onto holder, the bulge on the holder and the center hole of stainless-steel ring will keep the remote stay securely in place.
4. Temporary mounting on metal surface using its magnetic force, when taking off remote the holder will still be on mounting surface, will not be taken off together with remote.

